



Commissioning Support  
for London

# The Commissioning Friend for Mental Health Services.

Focusing on London

December 2009



Providing clinical and business support to London's NHS

---

# The London Mental Health Commissioning Programme

---

This insert for *The Commissioning Friend for Mental Health Services* highlights key pieces of work being undertaken in London.

The London Mental Health Commissioning Programme aims to support mental health commissioners across London to improve services and achieve world class commissioning standards.

As well as producing the Commissioning Friend for Mental Health Services, the programme holds regular workshops, produces best practice guidance and a regular bulletin that disseminates the latest news relevant to commissioners. All of its work is informed by London's mental health commissioners.





---

## Dementia services guide

---

Commissioning Support for London's mental health project and its partners recognise that people with dementia and their carers need improved access to early identification and diagnosis, better treatment in both primary and secondary care, and good quality information. Providing these dementia services will



significantly help to empower and support people with dementia and their carers so that they may make informed decisions as their condition progresses.

A guide to support London commissioners plan better services for people with dementia has been developed by Healthcare for London's mental health project. The *Dementia services guide* was approved by the London Commissioning Group in 2009 and focuses on providing integrated health and social care in the community and in hospitals.





Joan Mager, Chief Executive, NHS Richmond welcomes the introduction of London's *Dementia services guide*:

*"This guide will assist London's healthcare, social care and third sector organisations to commission services that will improve services and health outcomes and offer comprehensive support for people with dementia and their carers."*

The guide is available to download from:  
[www.healthcareforlondon.nhs.uk/mental-health](http://www.healthcareforlondon.nhs.uk/mental-health)

---

## Polysystems for London

---



Commissioning Support for London is supporting PCTs in the delivery of the Healthcare for London vision, which is a 10 year strategy for transforming how Londoners receive healthcare.

The implementation of polysystems is central to the successful delivery of this vision. With a polyclinic hub at its heart, a polysystem integrates local

GP practices with a range of other health services. They are clinically-led and are designed in consultation with local clinicians and residents.

The polyclinic hub delivers improved access to healthcare by providing GPs available from 8am to 8pm, seven days a week, alongside a number of other services:



- Access to a wider range of public services, including those needed by individuals who have a mental illness, in one easy visit. Services could include health and wellbeing classes, benefits support and housing advice.
- Walk-in appointments for registered and unregistered patients.
- Better and more local management of long-term conditions.
- A more accessible, local and convenient location for services that might otherwise be provided in a hospital such as X-rays and blood tests, as well as treatment for people who have minor injuries.

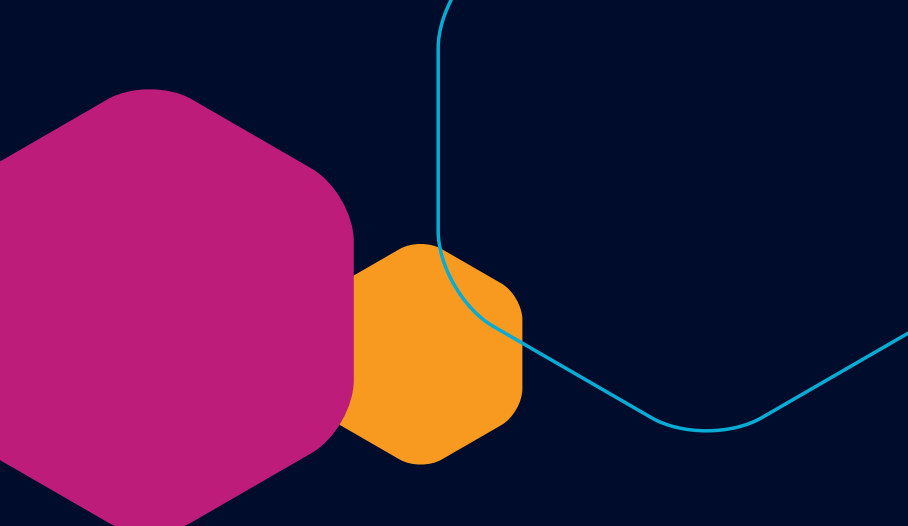
All PCTs in London are developing plans for polysystems and are on target to deliver 100% population coverage within the next five years.

Go to [www.healthcareforlondon.nhs.uk](http://www.healthcareforlondon.nhs.uk) for more information about Healthcare for London's polysystems project.

### **Other mental health work**

Other mental health work being undertaken by Commissioning Support for London includes programmes on equalities, mental health in later life, children and families, mental health first aid training, improving access to psychological therapies and working for wellness.

Links to all programmes can be found through [www.csl.nhs.uk](http://www.csl.nhs.uk)



[www.csl.nhs.uk](http://www.csl.nhs.uk)

 Providing clinical and business support to London's NHS